

SHANTUI

LE60-X3

Electric Wheel Loader



Battery capacity	282 kwh/350 kwh
Continuous working period	4-8 h
Operating weight	18,200 kg(282 kwh)/ 19,100 kg(350 kwh)

Performance delivered more than you expect
transmission efficiency is 20% higher, Eco-friendly

LE60-X3 SPECIFICATIONS

POWER BATTERY

Make	CATL
Model	CATL
Capacity	282 kw.h/350 kw.h
Rated Voltage	618V/580V

LOADER ARM PERFORMANCE

Tipping Load - Full Turn	11600 kg
Bucket Breakout Force	185 kN
Maximum Dump Angle at Full Height	45°
Dump Clearance at Full Height Discharge	3380 mm
Dump Reach at Full Height Discharge	1220 mm
Maximum Hinge Pin Height	4500 mm
Maximum Digging Depth, Bucket Level	115 mm
Bucket Capacity	3.3 m ³
Operating Weight	18200/19100kg

WALKING MOTOR

Maximum speed/rated speed	3200/800 r/min
Peak torque/rated torque	2400/1200 Nm
Peak power/rated power	200/100 kw

WORKING MOTOR

Maximum speed/rated speed	3000/1900 r/min
Peak torque/rated torque	800/400 Nm
Peak power/rated power	160/80 kw

AXLES

Total Reduction Ratio	22.853
Final Ratio/ Hub Reduction Ratio	4.625/4.94

TRANSMISSION

Ratio (Forward & Reverse)	I: 2.752 II: 1.032
Travel Speed (Forward & Reverse) km/h	I: 13 II: 33

STEERING

Steering Configuration	Articulated
Steering System Pressure	18 MPa

BRAKES

Service Brake Type	Caliper disc brake
Service Brake Actuation	Caliper disc brake
Parking Brake Type	Drum brake
Parking Brake Actuation	Hydraulic

TIRES

Tire Size	23.5-25 L3
-----------	------------

HYDRAULIC SYSTEM

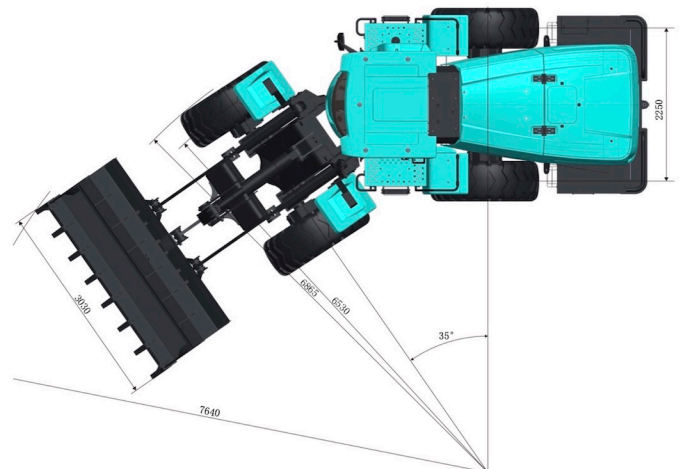
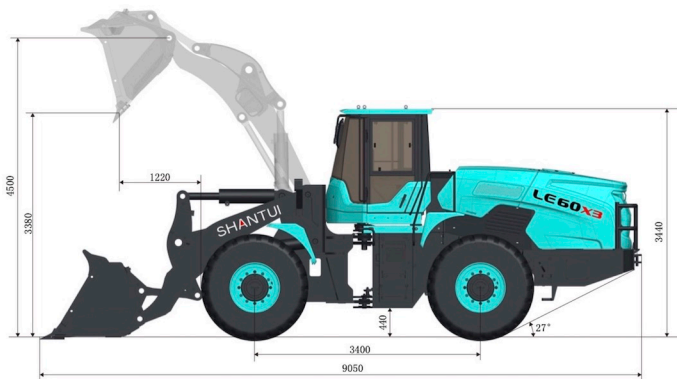
Main Pump Type	Quantitative Dual-pump
Main Relief Pressure	18 Mpa
Raise time	5.5 S
Total Cycle Time	9.5 S

SERVICE CAPACITY

Continuous working period	4-8 H
Hydraulic oil Tank	190 L
Axles, each	27X2 L
Transmission	32 L
Cooling System	29 L

DIMENSIONS

Length	9050 mm
Width	3030 mm
Height	3440 mm
Wheelbase	3400 mm
Wheel Tread	2250 mm
Ground Clearance	440 mm
Turn Angle, Either Side	35°
Turning Radius, Outside of Tire	6865 mm
Turning Radius, Center of Tire	6530 mm
Turning Radius, Bucket Carry	7640 mm



* THE SPECIFICATIONS ARE SUBJECT TO CHANGE WITHOUT NOTICE. THE PICTURES MAY INCLUDE OPTIONS. THE ACTUAL COLOR & APPEARANCE OF THE PRODUCT MAY DIFFER FROM WHAT IS SHOWN.

Shantui Europe
 Tel: +31 (0)6 3727 7298
 Email: info@shantui.nl
 Web: <https://www.shantui.nl>

SHANTUI
 LET'S MAKE CONSTRUCTION EASIER