

# SHANTUI

## SE36SR

Mini Excavator



Engine Model: YANMAR 3TNV88F  
Gross Power: 18.2kW/2200rpm  
Operating Weight: 3,800 kg

High Performance in a Compact Design

## WALK-AROUND

### AUXILIARY PIPING

• The excavator standard comes with one set of auxiliary pipelines, and can also be equipped with a second set of auxiliary pipelines as optional to meet the requirements of various attachments.



### LED LIGHT



### YANMAR ENGINE



- 1. Equipped with Japan Yanmar engine, meeting emission standards for Euro V, North America EPA 4, and national IV non-road mobile machinery, which is energy saving and environmental protection with strong power.
- 2. Adopting a load sensitive control hydraulic system, the system has high pressure, high efficiency, and fast action response.
- 3. Fully hydraulic pilot operated, with excellent handling performance.

### FOLDABLE BLADE



### TELESCOPIC TRACK



- The travel motor has an automatic speed control function, so the travel efficiency is higher.



## OPERATIONAL COMFORT

### LARGE OPERATOR ENVIRONMENT WITH ERGONOMIC CONTROL LAYOUT

The SE36SR provides an uncompromised operator environment – which, together with excellent visibility, provides unmatched operator comfort and safety. This machine is built around the operator – providing optimal ergonomics for operators of all sizes.

- Operator station
- Boom swing pedal
- AUX1 pedal
- Safety lever
- Dozer blade control lever
- Throttle lever
- LCD colour monitor
- Joystick
- Traveling control levers
- Horn



The 7-inch intelligent touch screen is used to integrate rich functions. And fuller and more intelligent human-computer interaction is also realized to enhance the operating experience.

The design of the instrument position is more ergonomic, making it more convenient and comfortable to use.

Emergency brake button

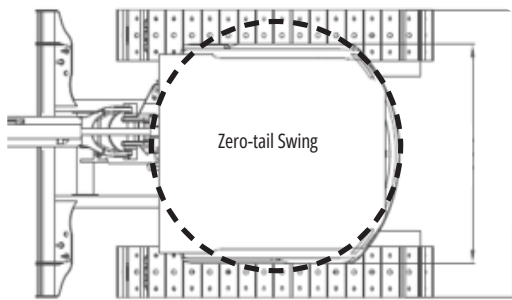
# HIGH PERFORMANCE IN TIGHT CONDITIONS

## A COMPACT MODEL WITH HIGH PERFORMANCE

The overall color combination is reasonable and beautiful, and the overall shape is small and exquisite, reflecting a familial and serialized style. It has multiple functions, excellent performance, smooth movements, and simple and practical operation.

### Zero-tail Swing

With zero-tail swing, even the tightest space becomes an efficient work place. The tail always stays within the width of the tracks (when extended) and lets you turn the canopy throughout its 360-degree turning radius with complete confidence and safety. Starting point by developing our zero-tail SE36SR, balance, fast and smooth operation was our main target. It results in a compact excavator with excellent balance and comes to its full potential in urban environments, landscaping, and small demolition in and outside buildings.



### Boom Swing

The swing frame adopts high-strength cast steel parts, with optimized structural components, making it sturdy and durable.

### Auxiliary piping

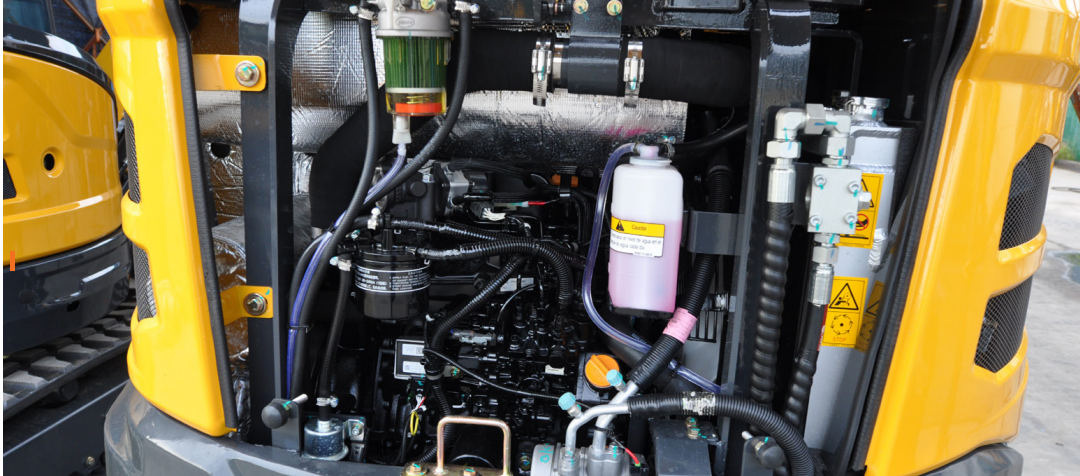
Auxiliary piping is standard. A second set of auxiliary piping is also available as an option. It can meet the configuration of various attachments.



# EASY ACCESS FOR MAINTENANCE

## EASY SERVICE ACCESS

SE36SR is developed with taking particular attention to ease of service access. With a single access point for the daily maintenance of all main components, fuel level gauge and refuelling through the lockable cap.

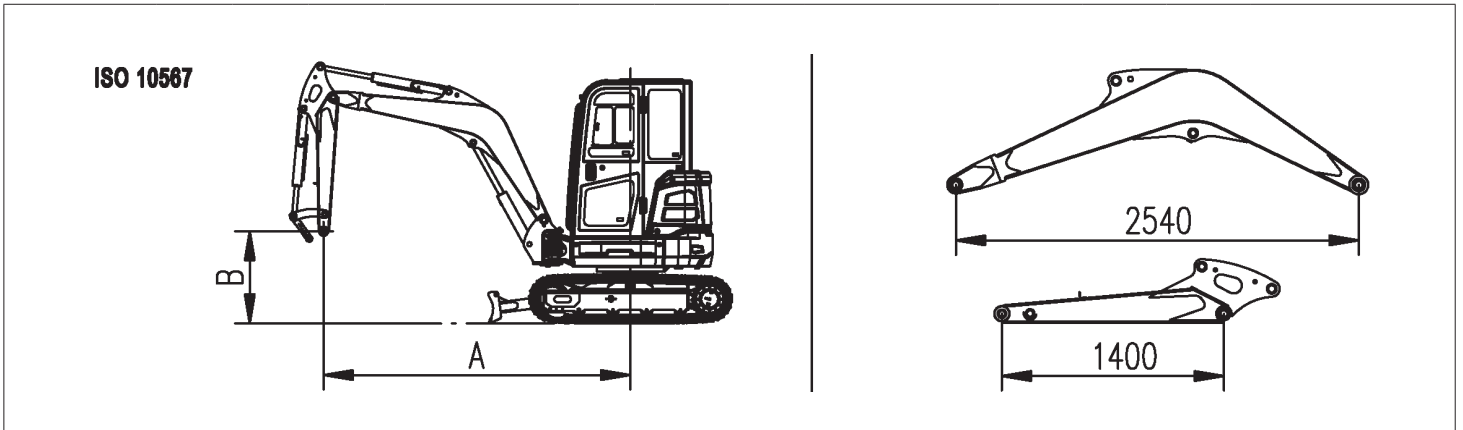


### EASY MAINTENANCE

- Fuel filter
- Water separator
- Air filter
- Engine oil filter
- Engine oil level check
- Coolant
- Start motor
- DC generator
- Battery
- Main switch
- Radiator & Oil cooler

The SE36SR is designed for lower maintenance cost with longer service intervals— resulting in more machine availability on-site. Meanwhile, skilled SHANTUI-trained technicians are available to provide extra support when needed.

## LIFTING CAPACITY FORM



LIFT	RATED LIFT CAPACITY OVER BLADE, BLADE DOWN-kg			RATED LIFT CAPACITY OVER BLADE, BLADE UP-kg			RATED LIFT CAPACITY OVER SIDE, BLADE UP-kg		
	2000	3000	4000	2000	3000	4000	2000	3000	4000
		At Max. Radius@ (mm)			At Max. Radius@ (mm)			At Max. Radius@ (mm)	
Amm	-	803*(2663)		-	704@(2663)		-	660@(2663)	
Bmm	-	818* 688@(3188)		-	534 484@(3188)		-	503 458@(3188)	
4000	-	1000* 855* 667@(3347)		-	820 522 410@(3347)		-	762 491 386@(3347)	
3000	-	1427* 1026* 695@(4755)		-	755 499 387@(4755)		-	703 468 364@(4755)	
2000	-	1650* 127* 787@(4602)		-	720 472 398@(4602)		-	699 452 371@(4602)	
1000	2352*	1632* 1072* 998@(4148)		1367	717 472 459@(4148)		1245	665 451 431@(4148)	
0	2037*	1217* 1020@(3224)		1413	743 - 665@(3224)		1287	691 - 620@(3224)	
-1000									

NOTICE:-2000

1. Please refer to the Operator's Manual for other details.

2. According to ISO10567, the rated load is 75% of the effective static tipping load, or 87% (\*) of the rated hydraulic lifting load (the standard value is the smaller one). It's able to turn 360 degrees and work on the flat ground.

3. Lift capacity stays with ±5% for all available track shoes.

## SPECIFICATIONS

### ENGINE

Model	YANMAR 3TNV88F
Type	Three cylinder direct injection
No. of cylinder	3
Emission	EPA Tier 4 Final/Europe Stage V
Displacement	1.642L
Power output	18.2kW/2200rpm

### HYDRAULIC SYSTEM

Type	Variable plunger pump Max. hydraulic flow
flow	96.8L/min

### DIGGING FORCE (ISO6015)

Bucket digging force	30.4kN
Arm digging force	18.2kN

### BUCKET

Type	Backhoe bucket
Bucket capacity	0.12m <sup>3</sup>
Bucket width	650mm

### DRIVE SYSTEM

Carrier roller qty	1×2
Track roller qty	2×4
Track shoes	2×44
Travel speed	2.4/4.4
Ground clearance	km/h
Grade ability	1295mm

### SWING SYSTEM

Swing speed	0-9r/min
-------------	----------

### REFILLING CAPACITIES & LUBRICATIONS

Fuel tank	50L
Cooling system	7L
Engine oil	6.7L
Hydraulic oil tank	40L
System Capacity	40L

### OPERATING WEIGHT AND GROUND PRESSURE

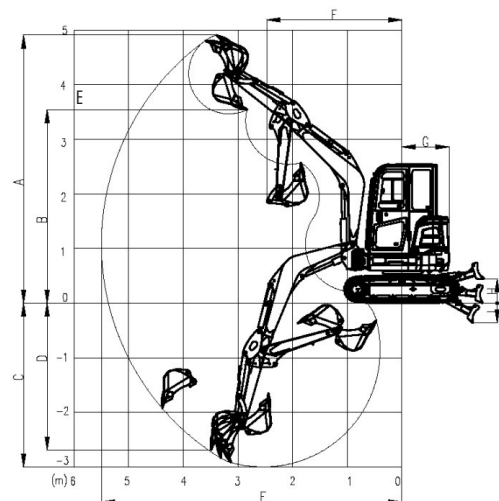
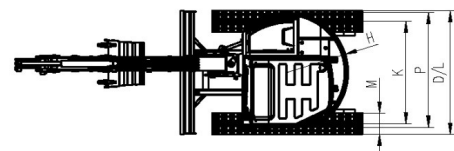
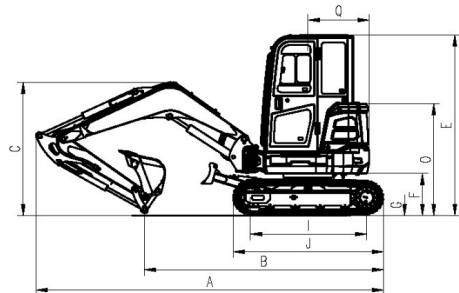
Shoe width	300mm
Ground pressure	32kPa
Operating weight	3800kg

### WORKING RANGE

	mm
A Max. digging height	4910
B Max. dumping height	3545
C Max. digging depth	3075
D Max. vertical digging depth	2640
E Max. Depth cut for 2500mm Level	-
F Bottom Max. digging distance	5500
G Max. digging radius at ground level	5345
H Maximum Dozer Lift Height	375
I Maximum Dozer Dig Depth	370

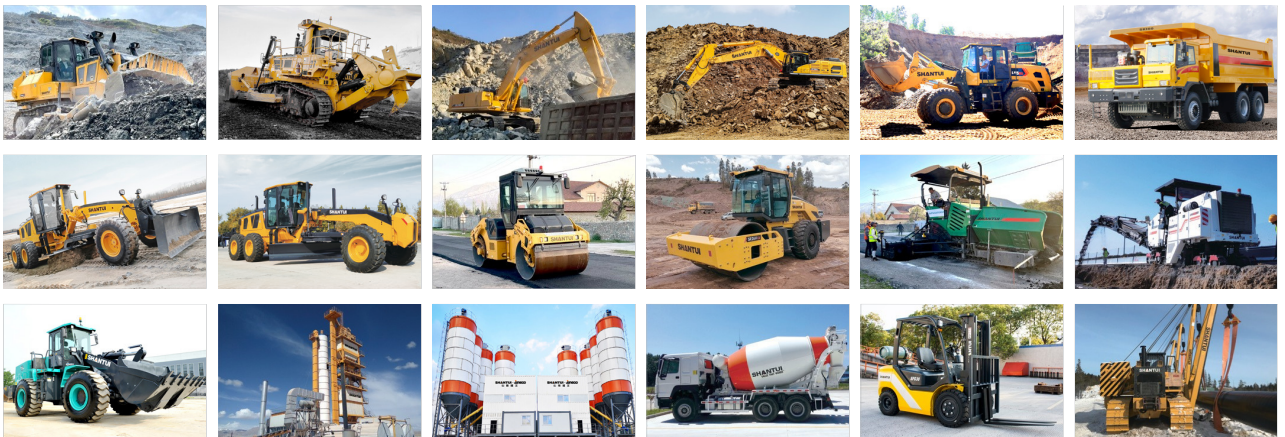
### DIMENSIONS (Boom: 2540mm Arm: 1400mm)

	mm
A Overall length	4880
B Ground contact length (Transportation)	3360
C Overall height(to top of boom)	1880
D Overall width	1740
E Overall height(to top of cab)	2550
F Counter weight ground clearance	595
G Ground clearance	295
H Tail swing radius	860
I Crawler wheel base	1670
J Track length	2155
K Track gauge	1440
L Track width	1740
M Shoe width	300
O Bonnet height	1550
P Revolving frame width	1550
Q Distance from swivel center to tail	860



VALUE THAT WORKS

GROUP PRODUCTS



Shantui Social

**SHANTUI CONSTRUCTION MACHINERY CO., LTD.**  
ADD: No. 58, G327 Highway, Jining City, Shandong,  
CHINA TEL: +86-537-2909369  
FAX: +86-537-2311219  
EMAIL: trade@shantui.com  
WEB: www.shantui.com

**SHANTUI**