

SHANTUI

SE17SR

Mini Excavator



Engine Model: Kubota D902
Gross Power: 11.8kW/2300rpm
Operating Weight: 1,700 / 1,800 kg

High Performance in a Compact Design

WALK-AROUND

The zero-tail swing SE17SR is the perfect choice for working in tight conditions. High performance in a compact design for greater versatility and controllability.

RADIO+USB+BLUETOOTH



LED LIGHT



BOLD PIPELINE



CAB OPTIONAL



TELESCOPIC TRACK



FOLDABLE BLADE



MERGENCY BRAKE BUTTON



OPERATIONAL COMFORT

LARGE OPERATOR ENVIRONMENT WITH ERGONOMIC CONTROL LAYOUT

The SE17SR provides an uncompromised operator environment – which, together with excellent visibility, provides unmatched operator comfort and safety. This machine is built around the operator – providing optimal ergonomics for operators of all sizes. Access to the seat is convenient thanks to the large entry.



HIGH PERFORMANCE IN TIGHT CONDITIONS

A COMPACT MODEL WITH HIGH PERFORMANCE

SE17SR with OPG/TOPS canopy (cab) provides excellent visibility, stability, optimal comfort, and safety. For tough jobs in tight corners that demand precision control and state-of-the-art performance.

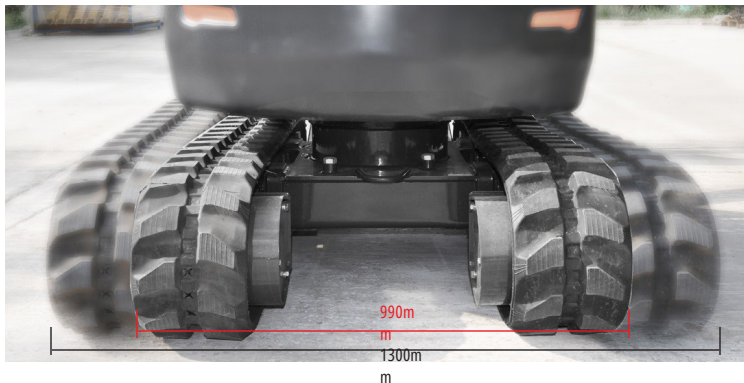
SE17SR is ready to work, offering following advanced features: Zero-tail swing, hydraulic retractable undercarriage, boom swing, foldable dozer blade. Featuring high reliability, low operating cost, and superior efficiency, and you've got the ideal mini for a wide range of modern jobs.

Zero-tail Swing

With zero-tail swing, even the tightest space becomes an efficient work place. The tail always stays within the width of the tracks (when extended) and lets you turn the canopy throughout its 360-degree turning radius with complete confidence and safety. Starting point by developing our zero-tail SE17SR, balance, fast and smooth operation was our main target. It results in a compact excavator with excellent balance and comes to its full potential in urban environments, landscaping, and small demolition in and outside buildings.

Extended Undercarriage

With the standard hydraulic retractable undercarriage passing through a narrow doorway or gate is easy. Extended undercarriage provides the operator better stability, lifting and loading performance.



Boom Swing

The left and right boom swing angle supports complex operating conditions like parallel wall digging or working in narrow spaces.

Foldable blade

Through two pin shafts, the dozer blade can be folded and expanded easily. In a confined space, the blade width can be adjusted arbitrarily, which makes the construction much easier.

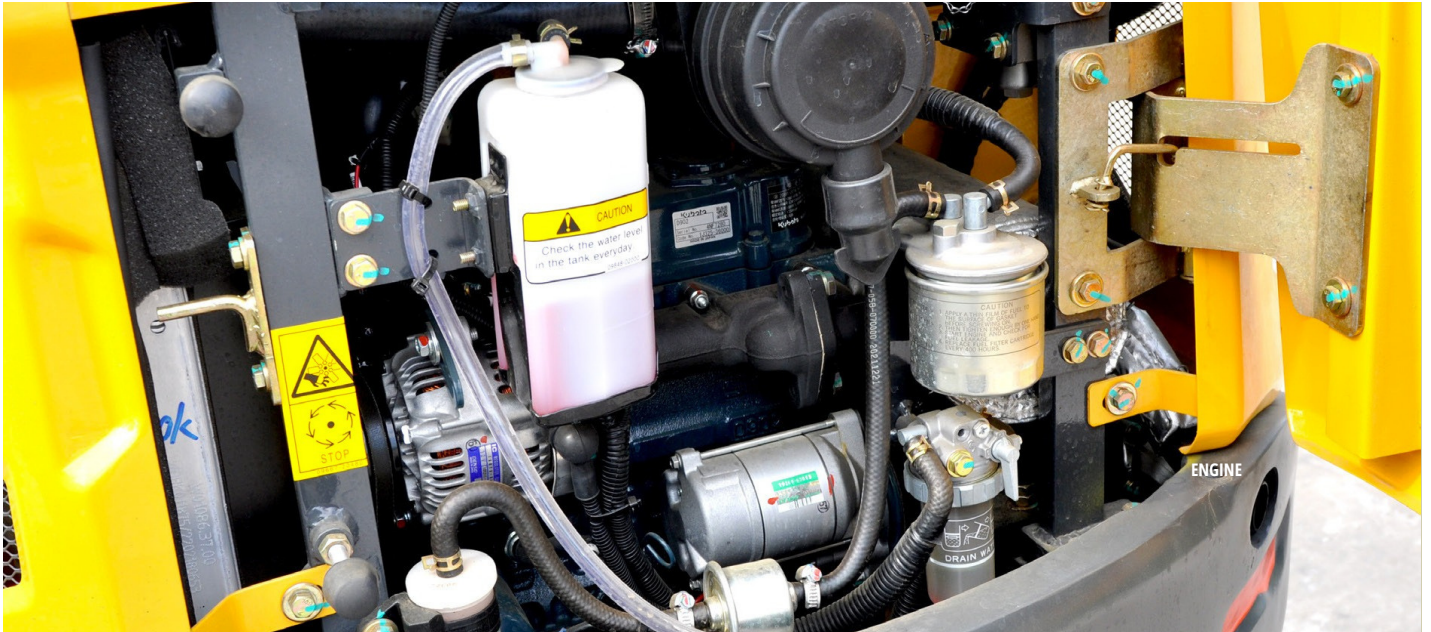


EASY ACCESS FOR MAINTENANCE

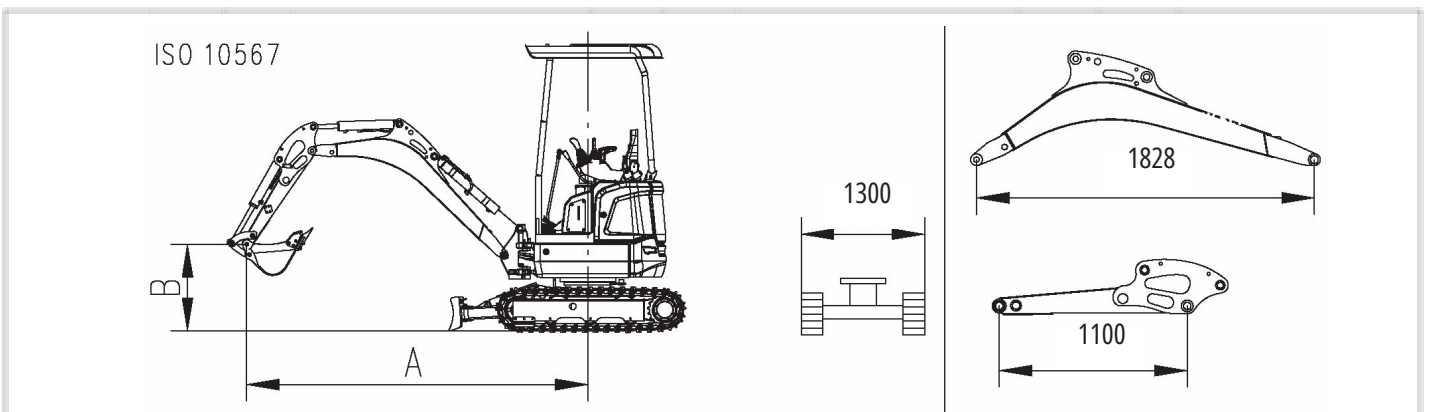
EASY SERVICE ACCESS

SE17SR is developed with taking particular attention to ease of service access. With a single access point for the daily maintenance of all main components, fuel level gauge and refuelling through the lockable cap.

The SE17SR is designed for lower maintenance cost with longer service intervals– resulting in more machine availability on-site. Meanwhile, skilled SHANTUI-trained technicians are available to provide extra support when needed.



LIFTING CAPACITY FORM



LIFT	RATED LIFT CAPACITY OVER BLADE, BLADE DOWN-kg		RATED LIFT CAPACITY OVER BLADE, BLADE UP-kg		RATED LIFT CAPACITY OVER SIDE, BLADE UP-kg	
	2000	3000At Max.Radius@(mm)	2000	3000At Max.Radius@(mm)	2000	3000At Max.Radius@(mm)
Amm	-	- 323*@(2577)	-	- 323*@(2577)	-	- 312@(2577)
Bmm	-	- 338*@(2965)	-	- 205@(2965)	-	- 198@(2965)
2500	554*	422* 366*@(3316)	338	155 131@(3316)	333	147 124@(3316)
2000	641*	404* 356*@(3261)	305	145 115@(3261)	300	137 109@(3261)
1000	438*	304*@(2767)	279	144@(2767)	272	138@(2767)
0						

NOTICE: -1000

1.Please refer to the Operator's Manual for other details.

2.According to ISO10567, the rated load is 75% of the effective static tipping load, or 87%(*) of the rated hydraulic lifting load (the standard value is the smaller one). It's able to turn 360 degrees and work on the Flat ground, 3.Lift capacity stays with ±5% for all available track shoes.

SPECIFICATIONS

ENGINE

Model	KUBOTA D902
Type	Vertical, water cool, 4-cycle
No. of cylinder	3
Emission	EPA Tier 4 Final/Europe Stage V
Displacement	0.898L
Power output	11.8kW/2300rpm

HYDRAULIC SYSTEM

Type	Axial piston-variable displacement
Max. hydraulic flow	28L/min

DIGGING FORCE (ISO6015)

Bucket digging force	16kN
Arm digging force	9.5kN

BUCKET

Type	Backhoe bucket
Bucket capacity	0.04 m ³
Bucket width	450 mm

DRIVE SYSTEM

Type	Axial piston motor
Track roller	2×3
Track shoes	2×37
Travel speed	2.2/4.3km/h
Max. Drawbar pull	18kN
Grade ability	58%

SWING SYSTEM

Swing motor type	Cycloidal motor
Swing speed	0-9.5r/min
Brake type	Pressure release mechanical braking

REFILLING CAPACITIES & LUBRICATIONS

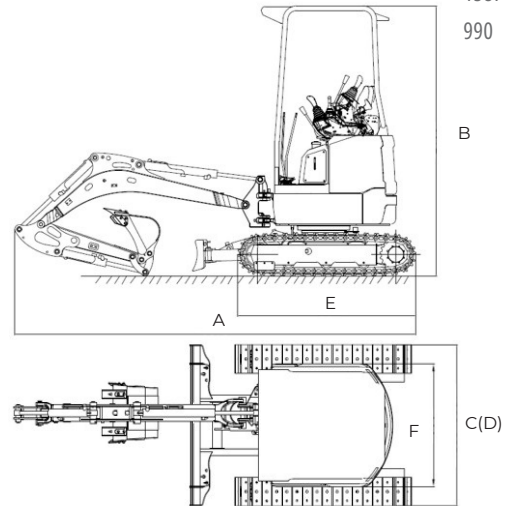
Fuel tank	19L
Cooling system	5L
Engine oil	3.7
Hydraulic oil tank	L

OPERATING WEIGHT AND GROUND PRESSURE

Shoe width	230mm
Ground pressure	m
Operating weight	29kPa
	1800kg

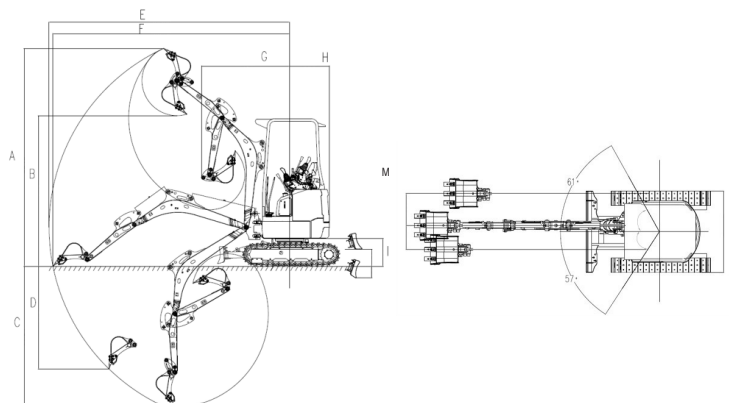
DIMENSIONS (DOM: 1828 mm ARM: 1100 mm)

A	Transport Length (arm lowered)	1587
B	Overall height (top of canopy)	990
C	Undercarriage Width (Retracted)	5
D	Undercarriage Width (Extended)	2405
E	Undercarriage Length	990
F	Upperbody width (zero tail)	1300



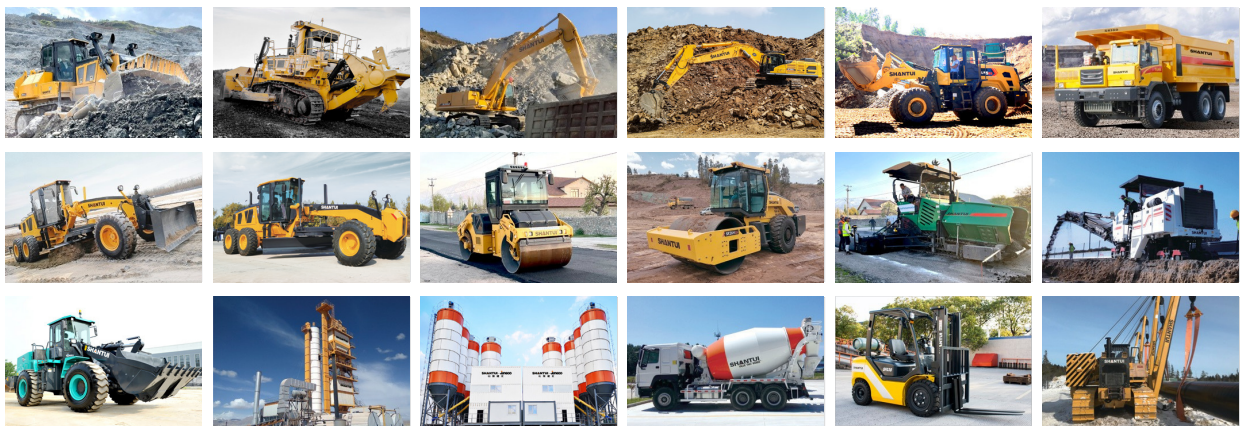
WORKING RANGE

	mm	
A	Max. digging height	3675
B	Max. dumping height	2580
C	Max. digging depth	2425
D	Max. vertical digging depth	1760
E	Max. digging radius	4045
F	Max. digging radius, at ground level	3985
G	Min. swing radius of work	1375
H	equipment Min. tail swing radius	650
I	Ground clearance of counterweight	450
J	Maximum Dozer Lift Height	280
K	Maximum Dozer Dig Depth	190
L	Maximum Boom Offset (LH)	385
M	Maximum Boom Offset (RH)	510
N	Boom Swing Angle (LH&RH)	57° / 61°



VALUE THAT WORKS

GROUP PRODUCTS



Shantui Social

SHANTUI CONSTRUCTION MACHINERY CO., LTD.
ADD: No. 58, G327 Highway, Jining City, Shandong,
CHINA TEL: +86-537-2909369
FAX: +86-537-2311219
EMAIL: trade@shantui.com
WEB: www.shantui.com

SHANTUI